

Comparison of Different Techniques for the Diagnosis of Parasitic Infections among Leukemic Children

Shaibat-El-Hamd ZM*, El-Masry SA*, Hassab HM**, Hassan AA*, and Hassanein FI*

ABSTRACT: Background/objectives: Acute lymphocytic leukemia (ALL) is a worldwide problem, and it is more prevalent in children. As the chemotherapy is taken, the host defenses are altered and the patient becomes more liable to infection. This study aimed at determining the frequency of parasitic infections among children with ALL in relation to controls, and to evaluate the different techniques used in the diagnosis of these infections. **Methods:** The study was carried out in Alexandria University Children's Hospital at El-Shatby during one year. The study included 117 children with ALL, and same number of immunocompetent children as a control group. Stool, urine, cerebrospinal fluid (CSF), and blood samples were collected and prepared to be examined by different techniques. **Results:** The overall percentages of parasitic infections were 90.6% and 58.1% among leukemic children and controls, respectively. Microsporidiosis was the most prevalent infection, and *Cryptosporidium parvum* was the most common coccidial infection. *Microsporidium* was the only parasite detected in the CSF of leukemic children. The best technique was modified Ziehl Neelsen to detect coccidia, Trichrome stain for protozoa and Quick-Hot Gram-chromotrope stain for microsporidial infection. **Conclusions:** There was a high percentage of parasitic infections among leukemic children, and the results indicate that the combination of many techniques is more likely to be effective in the diagnosis of these infections.

Key words: Acute lymphocytic leukemia (ALL); Leukemic children; Parasitic infection; Diagnostic Techniques

INTRODUCTION

Acute lymphocytic leukemia is a cause of malignancy in children, worldwide problem. It is the most common constituting 36.7% of all cases of childhood malignancy diagnosed in childhood, cancer diagnosed annually.⁽²⁾ Beside representing nearly one-third of all pediatric leukemia that causes anemia and cancers.⁽¹⁾ neutropenia, the intake of

In Egypt, according to the National immunosuppressive chemotherapy impair Cancer Registry, leukemia is the leading the immune responses and render the

*Department of Tropical Health, High Institute of Public Health, Alexandria, Egypt.

**Department of Pediatrics, Faculty of Medicine, Alexandria, Egypt.

subjects more liable to viral, bacterial, as well as opportunistic parasitic infections.⁽³⁾

In Alexandria and Turkey, studies on children with ALL reported parasitic infections in 40.6% and 47.3% respectively.^(4,5) In Iran, it was reported that the percentages of parasitic infections were 40% and 2.8% among leukemic children and controls, respectively.⁽⁶⁾

The current study aimed at determining the frequency of parasitic infections among children with ALL in relation to controls, and to evaluate different techniques in diagnosing these infections.

MATERIAL AND METHODS

The study was carried out in Alexandria University Children's Hospital at El- Shatby during one year. It is a comparative study, one hundred and seventeen children with ALL were enrolled in the study, they were from two to fourteen years. Same number of immunocompetent children were chosen as

matched by age and sex to represent the control group.

All the children were subjected to the following:

- 1- An interviewing questionnaire to collect data from the hospital's reports and mothers of the target children. It included socio-demographic data such as age, sex, residence, level of education, and occupation of their parents, housing conditions, and the presence of animals. Clinical data including general symptoms and local gastrointestinal tract symptoms were collected.
- 2- Stool samples were collected;
 - a- Fresh samples were prepared for agar plate culture technique⁽⁷⁾ to detect the larvae of *Strongyloides stercoralis*, other portions were prepared to be stained by trichrome stain⁽⁸⁾ to detect intestinal protozoa and Quick-Hot Gram-chromotrope stain (QHG)⁽⁹⁾ to

detect *Microsporidia*.

- b- Preserved stool specimens in 10% formalin were prepared by formol ether concentration technique (FE)⁽¹⁰⁾ to diagnose intestinal helminths, and by using modified Ziehl-Neelsen Technique (MZN)⁽¹¹⁾ to diagnose the different coccidia.
- 3- Cerebrospinal fluid (CSF) samples were collected from leukemic children only. Thin smears were stained by QHG⁽⁹⁾ and Giemsa⁽¹²⁾ stains to detect *Microsporidia* by both stains and *Toxoplasma gondii* by the latter stain.
- 4- Blood samples were collected and separated to sera to detect *Toxoplasma gondii* antibodies by using the enzyme linked immunosorbent assay (ELISA) (Toxo G480) test (Equipar kit for *Toxoplasma* IgG).⁽¹³⁾

Data were tabulated and analysed using statistical package for social sciences (SPSS) version 11.0 computer software package.⁽¹⁴⁾

RESULTS

Table 1 shows that the overall percentage of parasitic infections was higher among leukemic cases than that among controls (90.6% and 58.1% respectively). The difference was statistically significant, and the risk of infection was higher among cases relative to controls (OR = 6.94, CI = 3.22-15.29). Microsporidiosis was the most prevalent infection (60.7% of case vs 11.1% of controls).

This was followed by *Giardia lamblia* with percentages of 51.3% among leukemic children and 33.3% among the controls, *Entameba histolytica* / *dispar* (47% of cases vs. 30.8% of control) and *Entameba coli* (22.2% of cases vs. 0.9% of controls).

Concerning coccidial infections, the most commonly detected one was *Cryptosporidia* with percentages of 42.7% and 34.2% among leukemic children and controls, respectively, followed by

Cyclospora (22.2% vs. 24.8%), *Toxoplasma gondii* (13.3% vs. 6%) and finally *Isospora belli* (1.7% vs. 0.0%), respectively.

As regards helminthic infections, *Strongyloides stercoralis* showed the higher percentage among leukemic children (2.6%). *Enterobius vermicularis* and *Ascaris lumbricoides* were detected only in controls (5.1% and 6%, respectively).

Microsporidium was the only parasite detected in the CSF of leukemic cases with percentages of 54.7% and 53.7% by using Quick-Hot Gram-Chromotrope stain and Giemsa stain respectively. (Table 2)

Table 3 demonstrates that the percentage of parasitic infections by using trichrome staining technique for detecting the protozoa was higher than that by using formol ether and the difference was statistically highly significant. Also the percentage of coccidial infection by using MZN stain was higher than that by using formol ether and the difference was statistically significant. Quick-Hot Gram-Chromotrope showed that the percentage of infection by *Microsporidia* was significantly higher than by using MZN. Figures (1-6) Show some parasites by different stains

Table (I): Percentages of different parasitic infections among leukemic cases and controls

Parasitic infection	Leukemic cases n = 117		Controls n = 117		OR	95% Confidence Intervals		Test of sign.	
	No.	% [♦]	No.	% [♦]		Lower	Upper	χ^2	P
Protozoa									
- Flagellates and amebae									
<i>G. lamblia</i>	60	51.3	39	33.3	1.11	0.45	2.72	0.06	0.801
<i>E. histolytica/dispar</i>	55	47	36	30.8	1.06	0.46	2.44	0.02	0.876
<i>E. coli</i>	26	22.2	1	0.9	25.50	3.46	523.44	18.71*	<(0.001)
Subtotal	78	66.7	52	44.4	2.50	1.42	4.40	11.70*	<(0.001)
- Microsporidia	71	60.7	13	11.1	12.35	6.22	24.51	62.47*	<(0.001)
- Coccidia									
<i>C. parvum</i>	50	42.7	40	34.2	0.87	0.30	2.45	0.09	(0.764)
<i>Cyclospora</i>	26	22.2	29	24.8	0.48	0.21	1.11	3.54	(0.060)
<i>I. belli</i>	2	1.7	0	0	-	-	-	1.58	(0.503)
<i>T. gondii</i>	15	13.3 ^{♦♦}	7	6	1.88	0.64	5.67	0.78	(0.38)
Subtotal	63	53.8	49	41.9	1.62	0.93	2.81	3.36	(0.07)
Helminths									
<i>S. stercoralis</i>	3	2.6	0	0	-	-	-	17.00	(0.001)
<i>E. vermicularis</i>	0	0	6	5.1	-	-	-	1.99	(0.515)
<i>A. lumbricoides</i>	0	0	7	6	-	-	-	2.55	(0.228)
Subtotal	3	2.6	14	12	0.19	0.04	0.75	7.68	(0.006)
Total +ve	106	90.6	68	58.1	6.94	3.22	15.29	160.44*	(< 0.001)
Total -ve	11	9.4	49	41.9					
Total	117	100	117	100					

♦ Percentages are calculated from total sample.

♦♦ Percentages are calculated from 113 cases (4 cases were missing).

* Significant at $p < 0.05$

Table (2): Microsporidial infection detected in CSF of ALL children by two staining techniques

<i>Microsporidia</i>	Leukemic children on therapy		
	Total No. examined	Total infected	
		No.	%
Quick Hot Gram Chromotrope stain	95	52	54.7
Giemsa stain	95	51	53.7

Table (3): Percentages of intestinal parasites detected by different techniques in the whole samples (cases and controls)

Parasitic infection	FE		MZN		Trichrome		QHG		Test of sign.
	No.	%*	No.	%*	No.	%*	No.	%*	
<i>Giardia</i>	50	21.4	33	14.1	76	32.5	3	1.3	147.78** (< 0.001)
<i>E. histo/dispar</i>	31	13.2	0	0	77	32.9	0	0	232.44** (< 0.001)
<i>E. coli</i>	5	2.1	0	0	25	10.7	0	0	80.39** (< 0.001)
<i>Crypto</i>	10	4.3	90	38.5	0	0	0	0	338.97** (< 0.001)
<i>Cyclo</i>	0	0	38	16.2	21	9	3	1.3	95.82** (< 0.001)
<i>I. belli</i>	0	0	2	0.9	0	0	0	0	8.01 (0.09)
<i>Microsporidia</i>	0	0	16	6.8	0	0	84	35.9	293.11** (< 0.001)
<i>E. vermicularis</i>	6	2.6	0	0	0	0	0	0	24.12** (< 0.001)
<i>Ascaris</i>	7	3	0	0	0	0	0	0	28.17** (< 0.001)
<i>Total infection</i>	89	38.03	105	44.9	120	51.3	84	36	

* % calculated from total examined (n=234)

** Significant at p < 0.01

FE= Formol ether MZN= Modified Zieh-Neelsen

Q HG= Quick-Hot-Gram-chromotrope

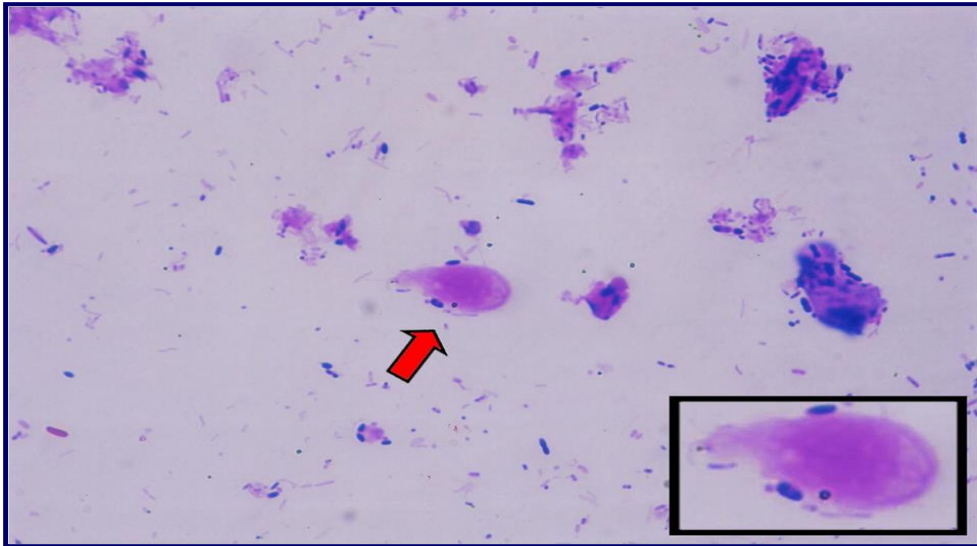


Fig. (1): *G. lamblia* (veg. form) by MZN (1000X)

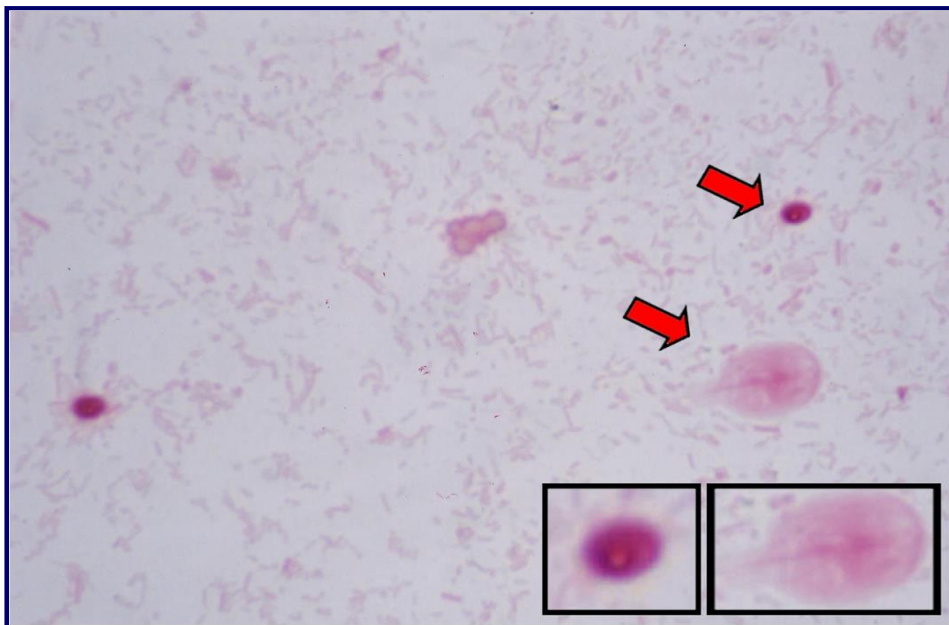


Fig. (2): *G. lamblia* (cyst and veg. forms) by trichrome stain (1000X)

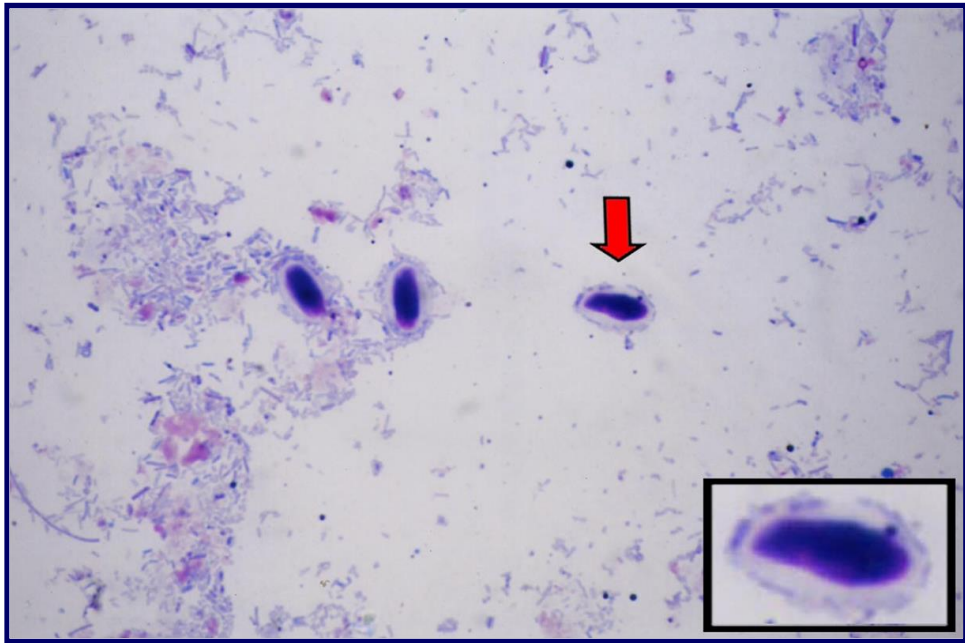


Fig. (3): *I. belli* by MZN (1000X)

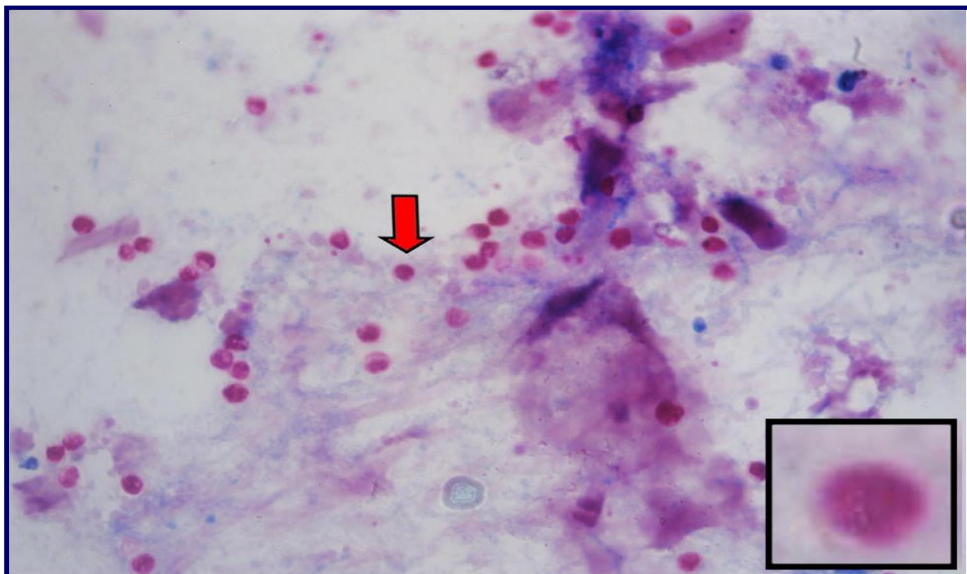


Fig. (4): *C. parvum* by MZN (1000X)

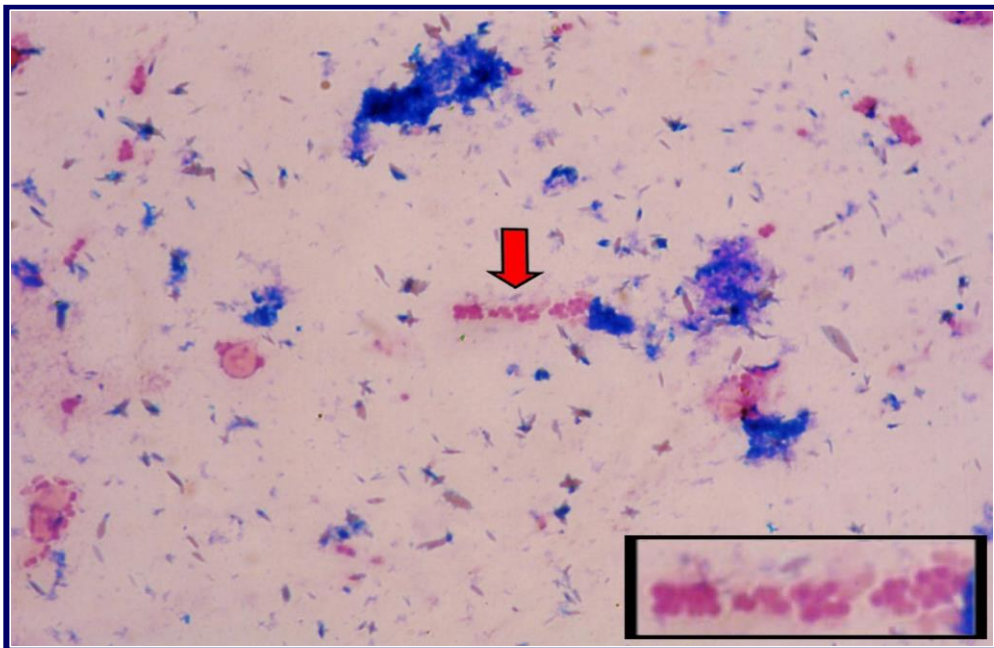


Fig. (5): *Microsporidia* by QHG in stool sample (1000X)

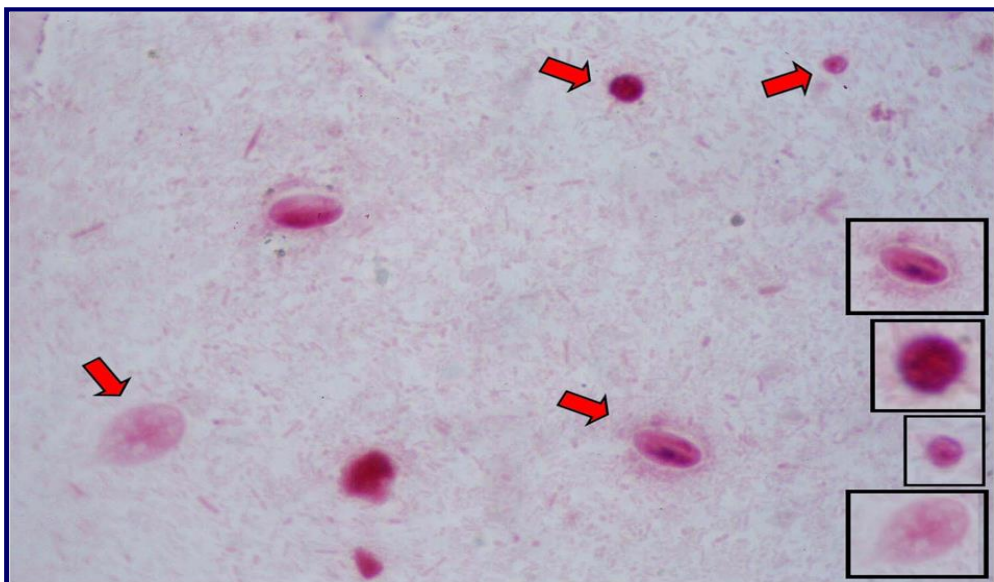


Fig. (6): *G. lambia* (cyst & veg. forms, *Cyclospora* and *E. histolytica* cyst by trichrome stain (1000X)

DISCUSSION

In the present study, several staining procedures were used to detect parasitic infections among leukemic children and controls. The high rates of infection observed in both groups may be due to the combination of different techniques done in the study which facilitate the diagnosis of different types of protozoa.

It was revealed that the overall percentage of infection was higher among cases than the controls; this might be attributed to the decrease of the immunological status of the leukemic children and their susceptibility to infection with opportunistic pathogens. Other studies reported high rates of parasitic infections among immunocompromised children in Egypt⁽¹⁵⁾, and other countries^(5,6).

In the present work, the protozoa were the most prevalent infection and helminths were the least. Conversely, a study in Nigeria reported that among AIDS patients, helminthic infections had higher rates than

protozoal infections⁽¹⁶⁾.

Different laboratory techniques in the present study proved that the MZN technique was a good reliable test for the identification of coccidia. Garcia and Bruckner⁽¹⁷⁾ stated that the most effective technique in detecting *Cryptosporidia* is the MZN, and this was also proved by many authors^(18,19).

By comparing the different stains, the present study showed that the highest percentages of protozoal infections were reported by using trichrome staining technique (percentages of *G. lamblia*, *E. histolytica*, and *E. coli* were 32.5%, 32.9%, and 10.7% respectively), followed by formol ether concentration technique (same protozoa had percentages of 21.4%, 13.2%, and 2.1%, respectively). This can be explained because protozoa were less subjected to distortion by using trichrome technique, in addition, this stain had the ability for the identification of impeded

protozoa, even in the thicker smear. Idris and AL-Jabri⁽²⁰⁾, revealed that the trichrome stain was superior to all other procedures in the detection of cysts and trophozoites of protozoa. Elkins⁽²¹⁾ showed that trophozoites were difficult to be detected in feces particularly when they are no longer motile, and the cysts may be confused with pus cells or macrophages, hence it was found that trichrome stain helps to overcome these problems.

In the present study, the Quick-Hot Gram-Chromotrope staining technique was more sensitive in revealing *Microsporidia* with the highest percentage (60.7%) than that in the other techniques. A previous study demonstrated that the prevalence of *Microsporidia* in AIDS patients can exceed 20% by using the same technique⁽²²⁾. Another study in the United States reported that the percentage of microsporidiosis was 15-34% among immunosuppressed adults⁽²³⁾. *Microsporidia* have been underestimated in a previous study

(Goncalves da costa, 2000) due to the lack of application of accurate diagnostic methods⁽²⁴⁾.

The results of this study indicate that the combination of many techniques is more effective in revealing parasitic infections among children with ALL.

REFERENCES

1. Crist WM, Smithson WA. The leukemias. In: Behrman RE, Kliegman RM, Jenson HB. Nelson Text book of Pediatrics. 16th ed. Philadelphia: WB. Saunders Co; 2000; 1543-1548.
2. National Cancer Registry. Ministry of Health and Population, Egypt 2002. 8.
3. Abaza SM, Makhlof LM, El-Shewy KA, El-Moamly AA. Intestinal opportunistic parasites among different groups of immunocompromised hosts. J Egypt Soc Parasitol. 1995; 25 (3): 713-29.
4. Abdel-Rahman ES. Intestinal parasites in different groups of immunocompromised children. Master of Paediatrics thesis, Faculty of Medicine Alexandria, 2000.
5. Aksoy U, Erbcy A, Akisu C, Apa H, Özkoc S. Intestinal parasites in children with neoplasms. Turkish J Pediatrics. 2003; 45: 129-32.
6. Gharavi MJ, Ashraf F, Vosough P, Rokni MB. Survey of intestinal parasitic infection in leukemic children and evaluation of their serum immunoglobulins. Iranian J Publ Health. 2003; 32(1): 19-21.
7. Koga K, Kasuya S, Khamboonruang C. An evaluation of the agar plate method for the detection of *Strongyloides*

- stercoralis* in northern Thailand. J Trop Med Hyg. 1990; 93: 183-8.
8. World Health Organization. Basic Laboratory Methods. In: Medical Parasitology. Geneva: WHO; 1991.19-21.
 9. Weber R, Bryan RT, Owen RL, Wilcox CM, Gorelkin L, Visvesvara GS. Improved light-microscopical detection of *Microsporidia* spores in stool and duodenal aspirates. N Engl J Med. 1992; 326: 161-6.
 10. Cheesbrough M. Techniques used to identify parasites. In: Medical laboratory manual for tropical countries: Vol. 1, 2nd ed. Cambridge: ELBS with Tropical Health Technology, Butterworth-Heinemann; 1991. 185-186.
 11. Garcia LS. Practical guide to diagnostic Parasitology. Washigton DC: ASM Press; 1999; 100-3.
 12. Conly JM, Ronald AR. Cerebrospinal fluid as a diagnostic body fluid. Am J Med. 1983; 75(1B): 102-8.
 13. Partanen P. Immunoblot analysis of *Toxoplasma gondii* antigens by human immunoglobulin G, M and A antibodies at different stages. J Clin Microbiol. 1984; 20: 133.
 14. Feinstein AR. Principals of medical statistics. Boca Raton: Chapman & Hall / CRC.A CRS Press Company; 2002.
 15. Hegab MH, Zamzam SM, Khater NM, Tawfeek DM, Abdel-Rahman HM. Opportunistic intestinal parasites among children with chronic liver disease. J Egypt Soc Parasitol. 2003; 33 (3): 969-77.
 16. Okodua M, Adeyeba OA, Tattfeng YM, Okpala HO. Age and sex distribution of intestinal parasitic infection among HIV infected subjects in Abeokuta, Nigeria. Online Journal of Health end Allied Sciences. 2003; 2(4).
 17. Garcia LS, Bruckner DA. Intestinal protozoa: Coccidia and *Microsporidia*. In: Diagnostic Medical Parasitology, 3rd ed., Washington, DC: 1997.
 18. Osman GA, Makled KM, El-Shakankiry HM, Metwali DM, Abd El-Aziz SS, Safaan HH. Coccidian parasites as a cause of watery diarrhea among protein energy malnourished and other immunocompromised Egyptian Children. J Egypt Soc Parasitol. 1999; 29(3): 653-68.
 19. El-Nadi NA, Taha A. Intestinal parasites detected among haemodialysis –patients in Sohag University Hospitals. Sohag Faculty of Medicine, South Valley University.
 20. Idris MA, AL-Jabri AM. Usefulness of kato-katz and trichrome staining as diagnostic methods for parasitic infections in clinical laboratories. SQU Journal for Scientific Research. 2001; 3(2): 65-8.
 21. Elkins DBA survey of intestinal helminths among children of different social communities in Madras. India, Trans Royal Soc Trop Med Hyg. 1984; 78: 132-3.
 22. Kokoskin E, Gyorkos TW, Camus A, Cedilotte L, Purtill T, Ward B. Modified Technique for Efficient Detection of *Microsporidia*. Journal of Clinical Microbiology. 1994; 32(4): 1075-974.
 23. Hopkins J. The Johns Hopkins Microbiology Newsletter. 2007; 26(14).
 24. Goncalve da Costa SC. Immunocompromised host: from the early events until the impact of acquired immunodeficiency. Rio de Janeiro, RJ, Brazil. 2000; 95(1): 141-4.